

SECTION A-A

Refer to <http://www.planetklx.com/techtips/kx-to-klx-forkswap.shtml> for more details, instructions and photos.

APPLICATION NOTES:

ADAPTING 1994 KX250 FRONT FORKS (ϕ 43mm) ONTO THE KLX300.

RETAINS THE KLX300 STOCK FRONT AXLE & WHEEL.

KX FORK TUBES BOLT INTO KLX TRIPLE CLAMPS.

RETAIN THE STOCK STEERING GEOMETRY BY SHORTENING THE KX FORKS BY 1.25" (31.75mm) BY INSERTING FORK SPACER (-0001), ONE PER TUBE.

USE KLX300 STOCK LENGTH FORK SPRINGS.

PARTS REQUIRED

- Qty 2 : Fork Spacer -0001
- Qty 1 : Left Axle Spacer -0002
- Qty 1 : Right Axle Spacer -0003

DIMENSIONS ARE IN INCHES
[MILLIMETERS IN BRACKETS]

CAD GENERATED DRAWING,
DO NOT MANUALLY UPDATE

DO NOT SCALE DRAWING

NAME		e-MAIL		DATE
AUTHOR: Bruce Brazil		ibrew@sbcglobal.net		May 27, 2006
DRAWN: Adam Reif		1adam12@designmassif.com		May 27, 2006
NON-PROPRIETARY THE INFORMATION CONTAINED IN THIS DRAWING IS FOR THE EXPLICIT USE OF ALL KLX RIDERS IN THE UNIVERSE. ANY REPRODUCTION IN PART OR AS A WHOLE WITHOUT THE WRITTEN PERMISSION OR CONCENT OF PlanetKLX IS ENCOURAGED.	UNLESS OTHERWISE SPECIFIED TOLERANCES SHOWN ARE:			MATERIAL ALUMINUM 6061-T6
	STANDARD	METRIC	ANGLES	FINISH RMS-63 μ in [RMS-1.6 μ m]
	.X = \pm .050	.X = \pm 1.3mm	\pm 0° 30"	WEIGHT
	.XX = \pm .025	.XX = \pm .63mm		23 grams
.XXX = \pm .010	.XXX = \pm .25mm			

Planet KLX

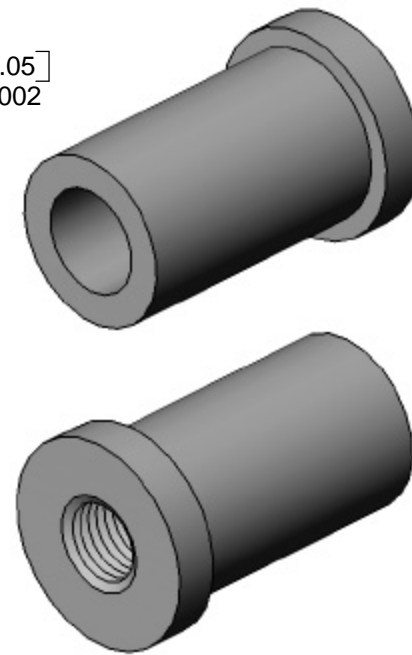
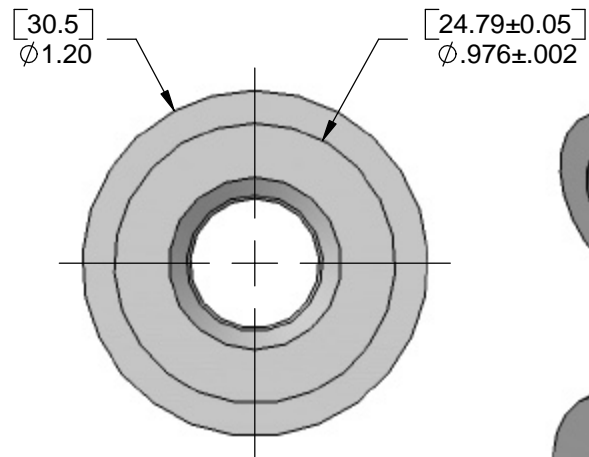
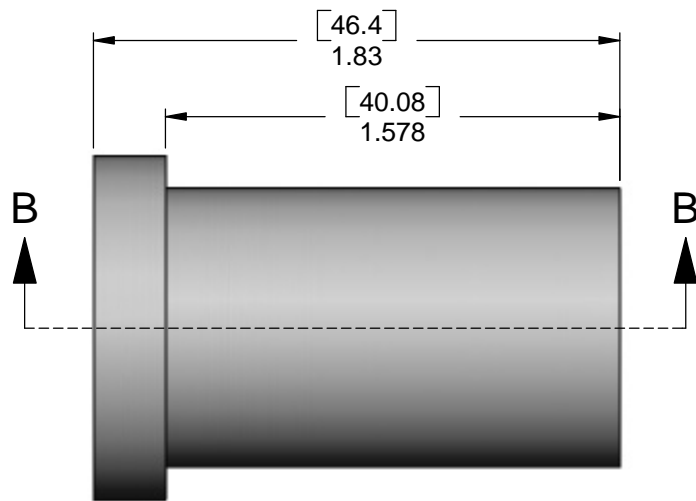
www.planetklx.com

TITLE: **SPACER, FORK**

SIZE A	DWG. NO. KLX300-0001	REV A
------------------	--------------------------------	-----------------

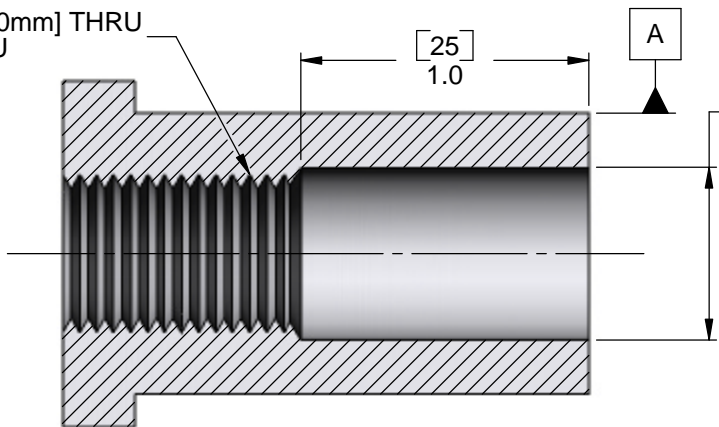
SCALE 3:2

SHEET 1 OF 3



DRILL .492 [Ø 12.50mm] THRU
TAP M14x1.5 THRU

Ⓢ .001 [.025] A



SECTION B-B

NOTE: M14x1.5 TAP AVAILABILITY

Use-Enco.com P/N 311-4331 \$10
McMaster.com P/N 26015A251 \$24
MSC-Direct.com P/N 74990938 \$25

Refer to <http://www.planetklx.com/techtips/kx-to-klx-forkswap.shtml>
for more details, instructions and photos.

DIMENSIONS ARE IN INCHES
[MILLIMETERS IN BRACKETS]

CAD GENERATED DRAWING,
DO NOT MANUALLY UPDATE

DO NOT SCALE DRAWING

NAME	e-MAIL	DATE
AUTHOR: Bruce Brazil	ibrew@sbcglobal.net	May 27, 2006
DRAWN: Adam Reif	1adam12@designmassif.com	May 27, 2006
NON-PROPRIETARY THE INFORMATION CONTAINED IN THIS DRAWING IS FOR THE EXPLICIT USE OF ALL KLX RIDERS IN THE UNIVERSE. ANY REPRODUCTION IN PART OR AS A WHOLE WITHOUT THE WRITTEN PERMISSION OR CONCENT OF PlanetKLX IS ENCOURAGED.	UNLESS OTHERWISE SPECIFIED TOLERANCES SHOWN ARE:	
	STANDARD	METRIC ANGLES
	.X = ± .050	.X = ± 1.3mm
	.XX = ± .025	.XX = ± .63mm ± 0° 30"
	.XXX = ± .010	.XXX = ± .25mm
MATERIAL ALUMINUM 6061-T6	FINISH RMS-63 µin [RMS-1.6 µm]	
WEIGHT	45 grams	

Planet KLX

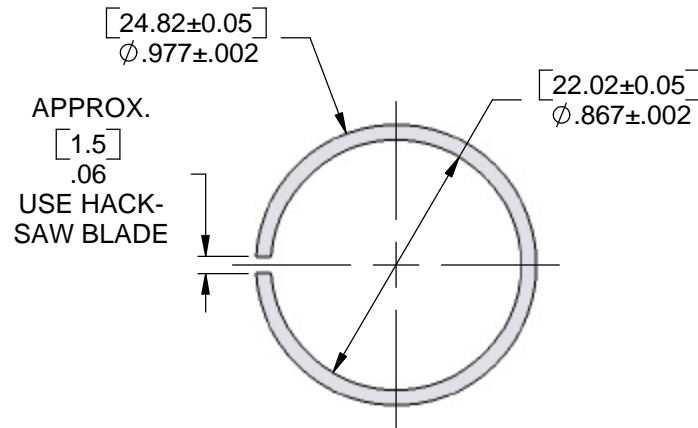
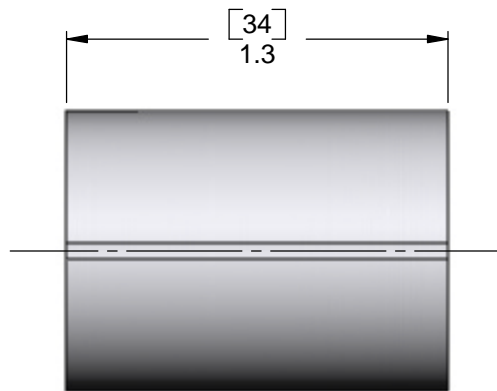
www.planetklx.com

TITLE: **AXLE SPACER, LEFT**

SIZE A	DWG. NO. KLX300-0002	REV A
------------------	--------------------------------	-----------------

SCALE 3:2

SHEET 2 OF 3



Refer to <http://www.planetklx.com/techtips/kx-to-klx-forkswap.shtml> for more details, instructions and photos.

DIMENSIONS ARE IN INCHES
[MILLIMETERS IN BRACKETS]

CAD GENERATED DRAWING,
DO NOT MANUALLY UPDATE

DO NOT SCALE DRAWING

NAME	e-MAIL	DATE	Planet KLX www.planetklx.com		
AUTHOR: Bruce Brazil	ibrew@sbcglobal.net	May 27, 2006	TITLE: AXLE SPACER, RIGHT		
DRAWN: Adam Reif	1adam12@designmassif.com	May 27, 2006	SIZE A	DWG. NO. KLX300-0003	REV A
NON-PROPRIETARY THE INFORMATION CONTAINED IN THIS DRAWING IS FOR THE EXPLICIT USE OF ALL KLX RIDERS IN THE UNIVERSE. ANY REPRODUCTION IN PART OR AS A WHOLE WITHOUT THE WRITTEN PERMISSION OR CONCENT OF PlanetKLX IS ENCOURAGED.	UNLESS OTHERWISE SPECIFIED TOLERANCES SHOWN ARE: STANDARD METRIC ANGLES		MATERIAL ALUMINUM 6061-T6 FINISH RMS-63 µin [RMS-1.6 µm] WEIGHT 9 grams		
	.X = ± .050	.X = ± 1.3mm			
.XX = ± .025	.XX = ± .63mm	± 0° 30"			
.XXX = ± .010	.XXX = ± .25mm		SCALE 3:2 SHEET 3 OF 3		